

The Arbors

2005 East Arbors Drive, Charlotte, North Carolina 28262

Office Space For Lease



Features:

- New professional/medical office building
- 1,465 to 16,200 SF
- Ideally located off Mallard Creek Church Road with close proximity to I-85, I-485, UNCC, CMC-University and Concord Mills
- Walking distance to Starbucks, Trader Joe's and numerous restaurants and retail shops
- Great visibility with prominent signage opportunities



LPA

Lat Purser
& Associates, Inc.

Mark Miller

telephone: 704.519.4247
mark.h.miller@latpurser.com

for information:

Phil Chambers

telephone: 704.519.4273
phil.chambers@latpurser.com

4530 Park Road, Suite 300, Charlotte, NC 28209
telephone: 704.519.4200 • fax: 704.525.8700 • www.latpurser.com

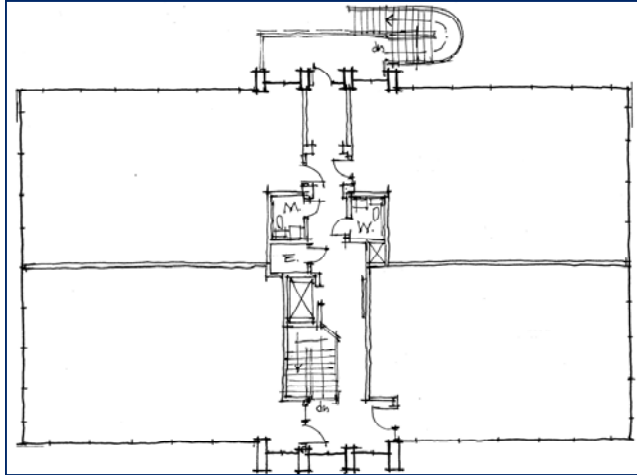
No warranty or representation, expressed or implied, is made to the accuracy of the information contained herein.

The Arbors

2005 East Arbors Drive, Charlotte, North Carolina 28262



Floor Plan



Phase One

1. Starbucks
2. Dry Clean Station
3. Pink Ice Women's Fitness
4. Super Suppers
5. Urban Skin & Laser Solutions
6. Liberty Tax
7. Universal Cuts
8. JV Nails
9. Quiznos
10. Toyama Express

Phase Two

12. Los Cabos Mexican Restaurant
13. Available 1592 SF
14. Thai Taste
15. Hollywood Tans
16. Available 1190 SF
17. Available 1194 SF
18. Figaro's Pizza
19. Hickory Tavern

Phase Three

22. Available 1200-2919 SF

Phase Four

25. Available 1200-6400 SF

Available Pads

21. Restaurant Pad Available
24. BB&T

LPA

**Lat Purser
& Associates, Inc.**

Mark Miller

telephone: 704.519.4247
mark.h.miller@latpurser.com

for information:
Phil Chambers

telephone: 704.519.4273
phil.chambers@latpurser.com

4530 Park Road • Suite 300 • Charlotte, NC 28209
telephone: 704.519.4200 • fax: 704.525.8700 • www.latpurser.com

No warranty or representation, expressed or implied, is made to the accuracy of the information contained herein.