

Providence Plaza

2907 Providence Rd., Charlotte, NC 28211

FOR LEASE



Features:

- **Ready for Tenants!!!**
- Class A Office Space for Lease in New Mixed-Use Project
- Available in Building 3:
 - 628 USF
 - 1,705 USF
- Will Subdivide
- Great Visibility at Major Intersection
- Ample Parking via Multi-Level Parking Deck
- Generous Tenant Upfit Allowance
- Restaurants, Retail, and Coffee Shop Located in the Plaza
- Great Location, 1/2 mile to Cotswold Shopping Center, 4 miles to Uptown Charlotte

LPA

Lat Purser
& Associates, Inc.

Chad Hagerman

telephone: 704.519.4254

chad.hagerman@latpurser.com

for information:
Phil Chambers

telephone: 704.519.4273

phil.chambers@latpurser.com

4530 Park Road, Suite 300, Charlotte, NC 28209

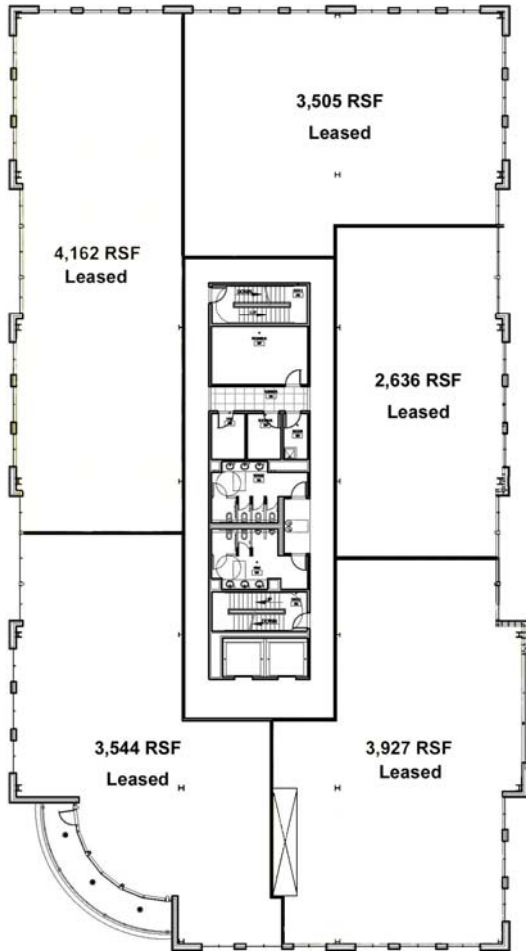
telephone: 704.519.4200 • fax: 704.525.8700 • www.latpurser.com

No warranty or representation, expressed or implied, is made to the accuracy of the information contained herein.

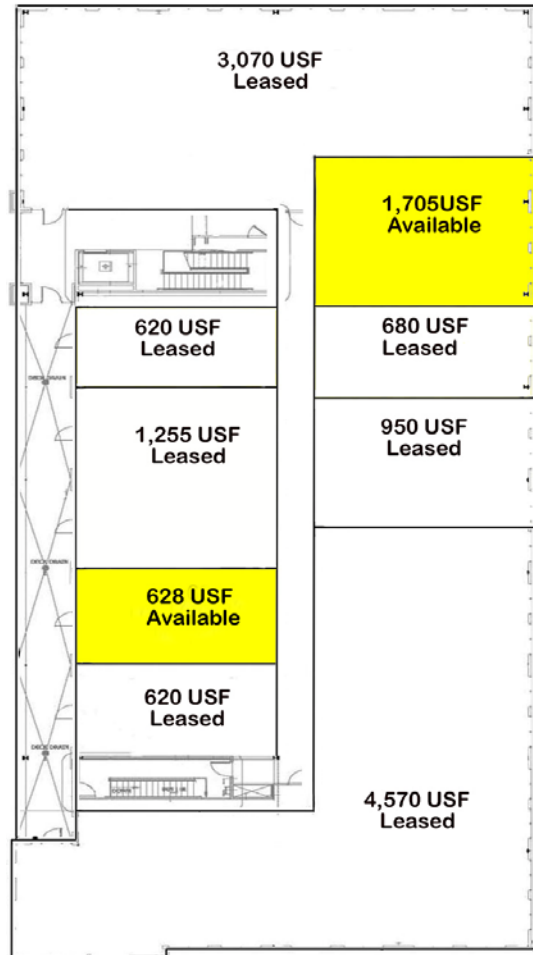
Providence Plaza

2907 Providence Rd., Charlotte, NC 28211

**Building A
3rd Floor**



**Building C
2nd Floor**



LPA

**Lat Purser
& Associates, Inc.**

Chad Hagerman

telephone: 704.519.4254

chad.hagerman@latpurser.com

for information:

Phil Chambers

telephone: 704.519.4273

phil.chambers@latpurser.com

4530 Park Road • Suite 300 • Charlotte, NC 28209

telephone: 704.519.4200 • fax: 704.525.8700 • www.latpurser.com

No warranty or representation, expressed or implied, is made to the accuracy of the information contained herein.